

# iScan<sup>3</sup>

## Flame Scanner

### THE MORE ADVANCED, MORE DURABLE, MORE COMPACT FLAME SCANNER.

The new iScan3 builds upon the proven performance of the iScan2 flame scanner, adding several design improvements and benefits you'll notice right out of the box. Our exclusive indicator light ring communicates at-a-glance, so you get the info you need quickly, clearly and without question. More durable materials increase the operating temperature range 15%. And a super compact design reduces the overall scanner size by 50%, simplifying installation and aiming.

### AT A GLANCE.

- iScan3 is fully backward compatible with iScan2 installations
- Simultaneous UV and IR radiation spectra detection capability
- Electronic self-checking ensures fail-safe operation and compliance
- Single-burner (SB) and Multi-burner (MB) models. SB is plug-n-play and requires no configuration, MB is configurable for complex applications
- Secondary Relay has 3 configurable modes:
  - N.O. Redundant Flame Relay
  - N.C. opposite state of Primary Flame Relay
  - N.O. or N.C. as Fault Relay as required
- 2- or 4-wire remote fire select with wire fault protection
- Pre-set over/under-temperature protection levels
- Fiber optic version available for a variety of applications
- Simplified initial setup with iScan software learns flame ON/OFF (MB only)
- DC over, under and reverse voltage protection



## Features

- Expanded ambient temperature rating (-40°C to 80°C)
- Exclusive, at-a-glance indicator light ring for quick, clear communication and simplified aiming during installation
- Smaller, lighter design for easier installation
- Quick disconnect for hazardous areas
- Proven performance with gas, light oils, heavy oils, biomass and coal
- 316 stainless steel, suitable for marine applications

iScan<sup>3</sup>



Chentronics is an ISO 9001:2015 Certified, global leader with 40 years of innovative ignition and flame assurance solutions for natural gas, light oil, diesel and residual fuel.

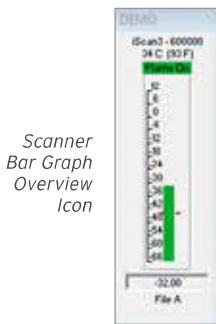


## iScan<sup>®</sup>3 FLAME SCANNER SPECIFICATIONS.

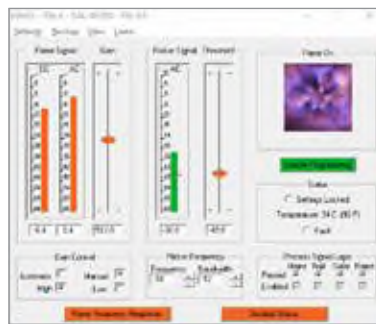
Flame Sensor	Combination UV/IR Solid State Sensor
Power	24 VDC, +/-15%, 5.28W, (220mA)
Electrical Connection	Quick-disconnect cable at selectable lengths from 10-250 ft. (3.1-76.2 m); 19 conductor, shielded
Mounting	Quick connect via 1" cam-and-groove hose coupling
Dimensions / Weight	Diameter 3.19 in. (81.0 mm) Length 8.21 in. (208.5 mm)
Operating Temperature	Ambient -40°C to 80°C (-40°F to 176°F)
Relay Output	Primary Flame Relay, one complimentary pair of N.O. / N.C. voltage-free (dry) contacts Secondary Relay has 3 configurable modes: 1) N.O. Redundant Flame Relay, 2) N.C. opposite state of Primary Flame Relay 3) N.O. or N.C. as Fault Relay as required Relay ratings: 0.5 @ 125VAC, 1A @ 24VDC, 0.5A @ 48VDC, 0.5A @ 250VAC
Analog Output	One 4-20 mA output for flame intensity One 4-20 mA configurable output for internal scanner temperature or gain level Output(s) are current-sourced, 750 ohm maximum load
Indicator Light Ring	Highly visible, multi-color display indicates signal level of the two 4-20mA outputs and flame on/off status
Communications	RS-485 - up to 127 scanners
Relative Humidity	100%, condensing
Enclosure	NEMA Type 4x, IP64, Class 1, Division II: Groups A, B, C, D (IECEX and ATEX)
Approvals	cETLus (Intertek Certified per CSA and UL Standards), IECEX, ATEX, SIL3, CE, and ABS. iScan3 flame scanners are tested and verified by Nationally Recognized Test Labs (NRTLs) CERTIFIED TO UL 60730-2-5



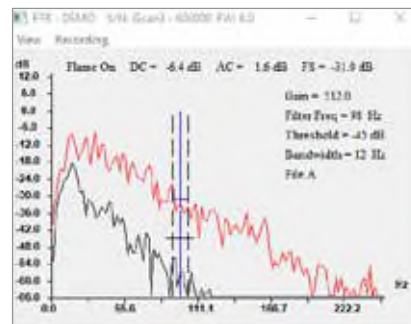
\* Specifications subject to change at any time.



Scanner Bar Graph Overview Icon



Setup/Control Panel



Target Burner Flame ON Frequency Spectrum (Live)

Background Flame Off Frequency Spectrum (Memorized & Overlay) for Comparison



**CHENTRONICS.COM**  
607-334-5531 / info@chentronics.com  
50 O'Hara Drive  
Norwich, NY 13815  
United States